



The Point
POINT LONSDALE

HR
HUDSON RIDGE
BUILDERS

Lot 1822 Coquina Drive
Point Lonsdale "The Point"

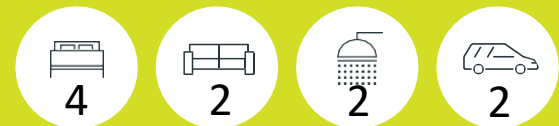
Size: 400m² 14 x 32m

Experience the Difference

HOUSE & LAND \$859,300

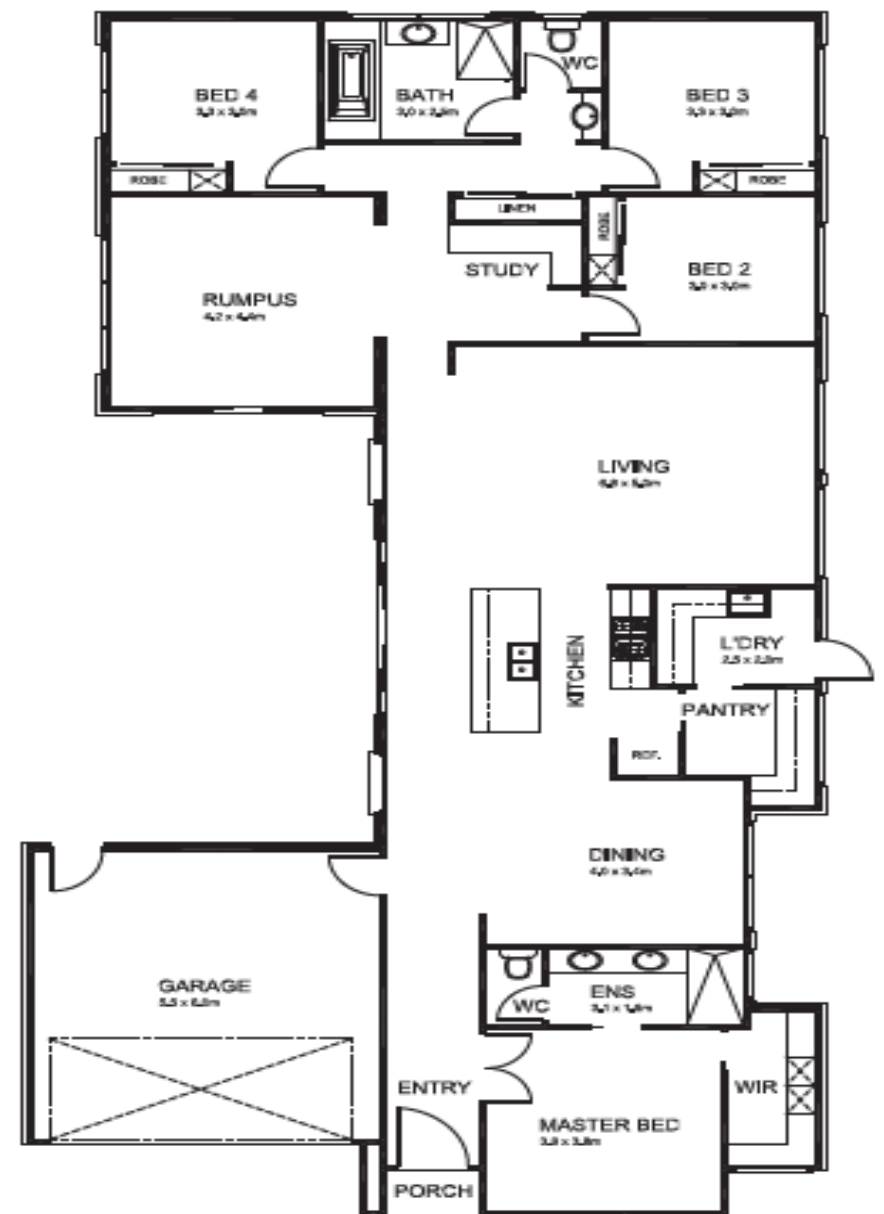
*Standard facade

NEVADA 26



Next Level INCLUSIONS

- Site costs included to H2 Raft slab
- Service connections
- CSR Hebel® render with 4 Coat Dulux® or brick veneer
- Colorbond® or tiled roof including sarking
- 2550mm ceiling height throughout with square set cornices
- 5 star rated ducted central heating plus evaporative cooling
- LED downlights throughout
- 3 coat wall paint application
- 40mm Caesarstone® in kitchen with soft close joinery
- 900mm Artusi® kitchen appliances including dishwasher
- Hardwood flooring (floating) and premium carpets
- 1200mm x 2340mm entry door including digital door lock
- Roller block out blinds throughout
- Flyscreens to windows and sliding doors
- Sectional garage door including remotes
- Exposed aggregate driveway and path



www.hudsonridge.com.au



fb.com/hudsonridgebuilders



@hudsonridgebuilders

CONTACT

sales@hudsonridge.com.au

PH: 52436120

*Additional site costs may be incurred due to undetermined site conditions contingent upon results of future soil test and site survey. Package is conditional upon: developer approval, council approval and land availability. House has not been built. Images are for illustrative purposes only and may depict: fixtures, finishes and features that are not standard. Prices are correct at time of publishing but future changes may occur without notice. Package price excludes: external lighting, telephone service, customer account opening fees, stamp duty on land, legal and conveyancing costs. Further terms and conditions apply. For comprehensive house and land specifications please speak with a Hudson Ridge representative. Hudson Ridge Builders Pty Ltd CDB - U 49722.