



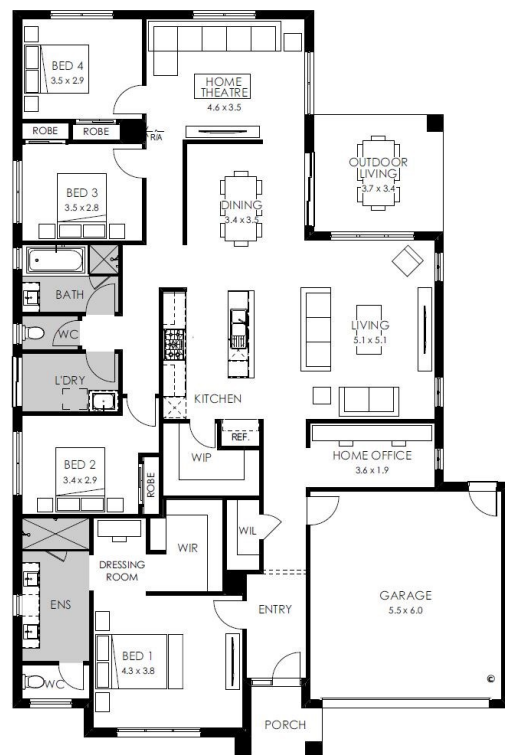
Marseille 28

Package from **\$1,362,800**

Lot 1 Briton Lane, The Point—Point Lonsdale
Land size: 510m²



- Stunning Mason façade
- Exclusive H&L driveway offer
- Double glazing, including sliding doors
- Quality floor coverings throughout
- 2550mm high ceilings to ground floor
- LED downlights to entry, kitchen and living
- Soft closers to Kitchen, Laundry, vanity drawers and doors
- ILVE 900mm wide oven, cooktop and rangehood
- 40mm Caesarstone kitchen benchtops
- 20mm Caesarstone to bathroom benchtops
- Quality Caroma basins and tapware
- Extending outdoor living
- Overhead cupboards adjacent to rangehood
- 25 Year Structural Guarantee & 12 Year Maintenance



Call Boutique Homes 9674 4500

Or email enquiries@boutiquehomes.com.au

boutiquehomes.com.au

The Point
POINT LONSDALE

boutique
homes

Image used is an artist impression for illustrative purposes only and may show decorative items not included in the price. Further terms and conditions apply to this offer including with respect to the price, for the full terms and conditions please visit <http://www.boutiquehomes.com.au/disclaimer>.