

Elements

by Boutique Homes

Midtown 26, Cove façade.
Package from \$885,000

 4  2  2

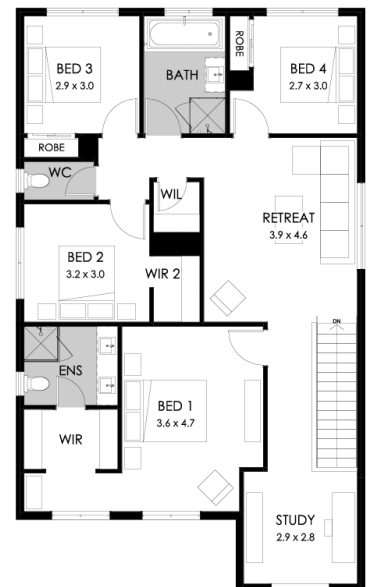
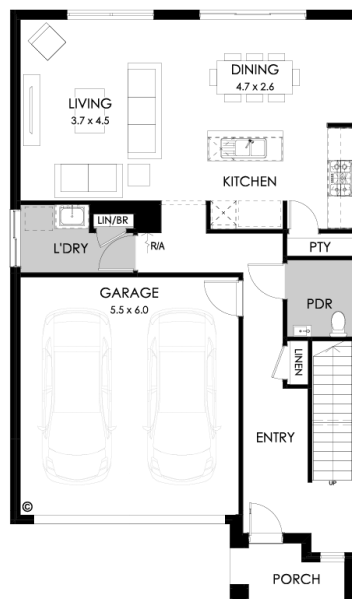


Lot 2216 Moonah Circuit Point Lonsdale The Point

Land size: **392m²**

Home Size: **240.11m²**

- Stylish modern facade with rendered feature
- Double glazing (including sliding doors)
- Quality flooring throughout
- 2400mm high ceilings
- 900mm Westinghouse kitchen appliances
- 20mm stone benchtops to kitchen
- Quality chrome or matt black tapware, throughout
- Quality Dulux paint
- Site cost allowance
- Developer guidelines
- 25 Year Structural Guarantee
- 12 Month Maintenance
- 7 Star energy rating



YOUR LOCAL NEW HOMES CONSULTANT

Tim Wright 0428 276 428 | twright@boutiquehomes.com.au

Price based on floorplan & façade shown and on builder's preferred siting. Image used is an artist impression for illustrative purposes only and shows 2400mm high ceilings plus decorative items not included in the price shown including path, fencing, landscaping, coach lights and furnishings. *From pricing contains an allowance for site costs, council and developer requirements and is subject to change. Block and building dimensions may vary from the illustration and the details shown. For more information on the pricing and specification of this home please contact a New Homes Consultant. ABN Group Victoria has permission of the owner of the land to advertise the land as part of the price specified. The price does not include transfer duty, settlement costs, community infrastructure levies imposed or any other fees or disbursements associated with the settlement of the land.

