



The Point Estate
Moonah Circuit, Point Lonsdale
Lot 2217

Facade: Hayworth

House: 50 sq

Land: 629 m2

5 5 3 2

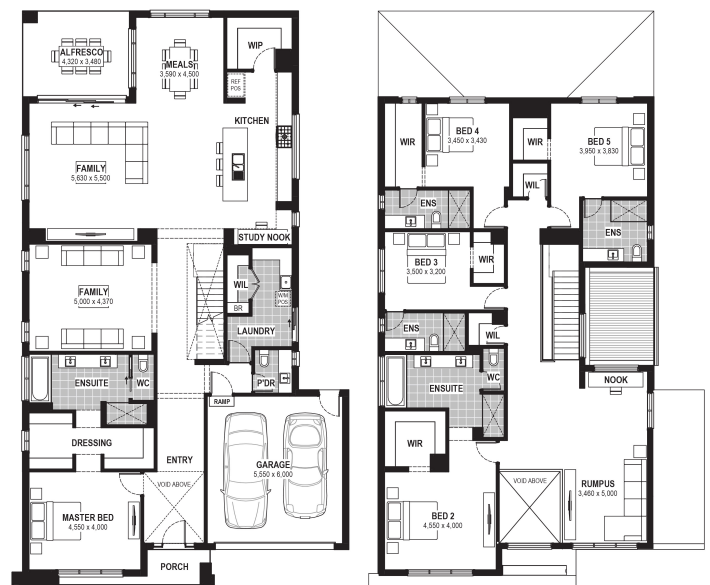
Howard 50

Inclusions

- Truecore Steel House Frame
- Colorbond Steel Roof (with Sarking)
- High Performance (uPVC) Double Glazed Safety Glass Windows & Doors
- 7 Star Energy Efficient to all orientations
- 7 x 440w Panels & 3KW Inverter (single phase)
- Bushfire Compliance to BAL 12.5
- 50 Year Structural Guarantee
- 2550mm Ceiling Heights
- Stone Benchtops to Kitchen
- 900mm Rangehood & Upright Cooker
- 2550mm Ceiling Height
- Caesarstone Benchtops to Kitchen & Vanities
- Developer Guidelines Included
- Laminate Flooring & Carpet Throughout
- NBN Fibre Package
- Site Costs Allowance Included

Contact:

Christian Keepen
0437 853 822
houseandland@jgking.com.au



GROUND FLOOR

FIRST FLOOR

*Conditions apply. Speak to your New Home Advisor for further details