



## The Point Estate

Crookhaven Street, Point Lonsdale  
Lot 2308

## Facade: Marvin

**House: 32.91 sq    Land: 838 m2**



## Hudson 33

## Inclusions

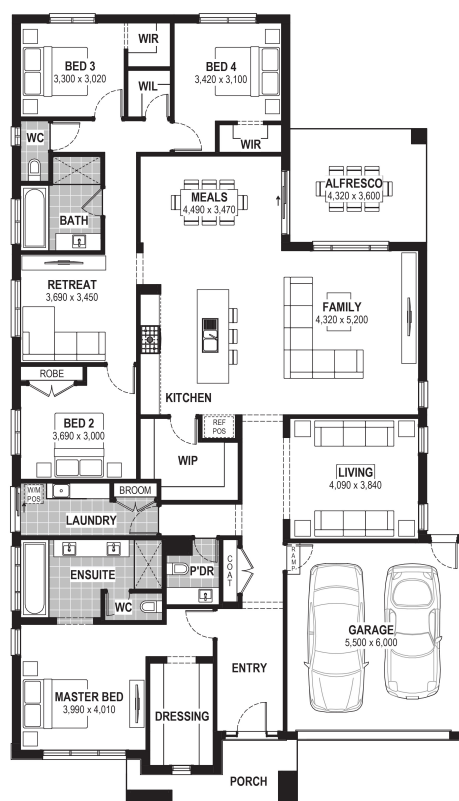
- Truecore Steel House Frame
- Colorbond Steel Roof (with Sarking)
- High Performance (uPVC) Double Glazed Safety Glass Windows & Doors
- 7 Star Energy Efficient to all orientations
- 7 x 440w Panels & 3KW Inverter (single phase)
- Bushfire Compliance to BAL 12.5
- 50 Year Structural Guarantee
- 2550mm Ceiling Heights
- Stone Benchtops to Kitchen
- 900mm Rangehood & Upright Cooker
- 2550mm Ceiling Height
- Caesarstone Benchtops to Kitchen & Vanities
- Developer Guidelines Included
- Laminate Flooring & Carpet Throughout
- NBN Fibre Package
- Site Costs Allowance Included

**Contact:**

Christian Keepen

0437 853 822

houseandland@jgking.com.au



\*Conditions apply. Speak to your New Home Advisor for further details