

Grange 36+ Cove façade.
Package price from \$1,318,000



Lot 2311 Whelk Close,
Point Lonsdale
The Point Estate

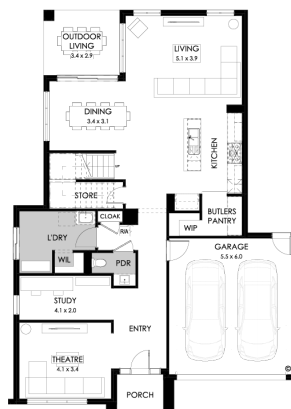
Land size: 726m²

Home Size: 329.75m²

- Stunning façade included
- Double glazing (including sliding doors)
- Quality floor coverings throughout
- 2740mm high ceilings to ground floor
- 2340mm high internal and external doors to ground floor
- Butler's Pantry
- LED downlights throughout home
- Soft closers to all kitchen, laundry, vanity drawers and doors
- Fisher & Paykel 900mm wide oven, cooktop and rangehood
- 40mm Caesarstone kitchen benchtops
- 20mm Caesarstone to bathroom benchtops
- Quality Caroma basins and tapware
- Overhead cupboards adjacent to rangehood
- Tiled splashback
- Fisher & Paykel Dishwasher and built in Microwave
- 25 Year Structural Guarantee

YOUR LOCAL NEW HOMES CONSULTANT

Jarryd Allen 0448 819 896 | jaallen@boutiquehomes.com.au



VALUEPLUS
DESIGNS



Price based on floor plan shown and on builder's preferred siting. Floor plan depicts a modern facade shown and included in price. Image used is an artist impression for illustrative purposes only and may show decorative items not included in the price shown including path, fencing, landscaping, coach lights and furnishings. The price is based on developer supplied engineering plans and plans of subdivision and final pricing may vary if actual site conditions differ to those shown in these developer supplied documents Block and building dimensions may vary from the illustration and the details shown. The price does not include transfer duty, settlement costs, community infrastructure levies imposed or any other fees or disbursements associated with the settlement of the land. Additions to the contract may be required in order to comply with Council and Regulatory Authority requirements which may also affect the price. Pricing subject to change without notice. Further terms and conditions apply to this offer including with respect to the price, for the full terms and conditions please visit <http://www.boutiquehomes.com.au/disclaimer>.